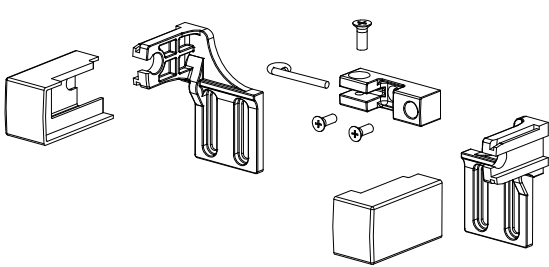


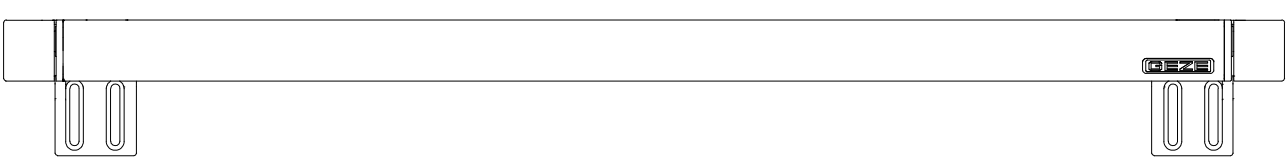
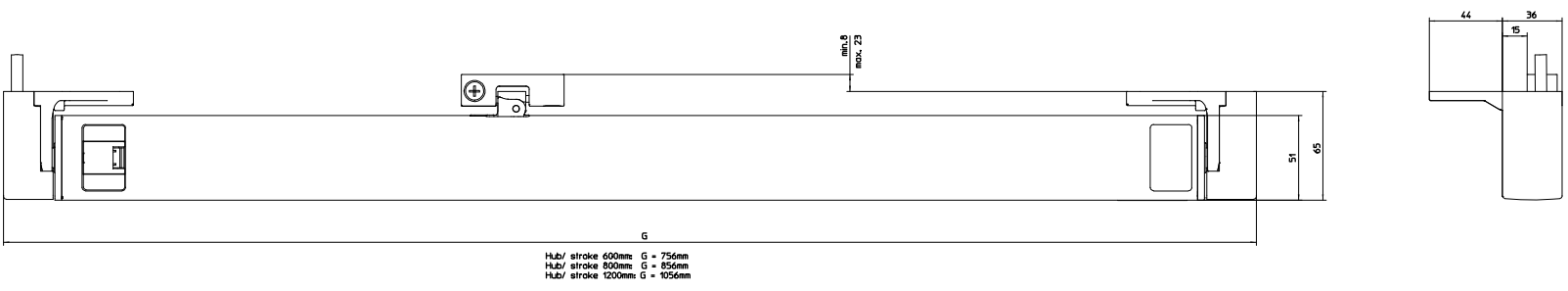
	Seitenansicht rechts Side view right	Seitenansicht links Side view left	Vorderansicht Front view	Draufsicht Top view
Antrieb Drive				
Kette Chain				
Antrieb + Kettenbock A Drive + Chain bracket A				
Kettenbock A + Montageplatte Chain bracket A + mounting plate				
Antriebshalter A Drive holder A				
Antriebshalter A + Abdeckung Drive holder A + Cover				
Antrieb + Kettenbock B (ohne Kabel) Drive + Chain bracket B (w/o cable)				
Kettenbock B Chain bracket B				
Antriebshalter B Drive holder B				
Antriebshalter B + Abdeckung Drive holder B + Cover				

Rahmenmontage ausw./ Flügelmontage einw.  
Frame mounting outw./ Leaf mounting inw.

Konsolensatz B  
Bracket set B



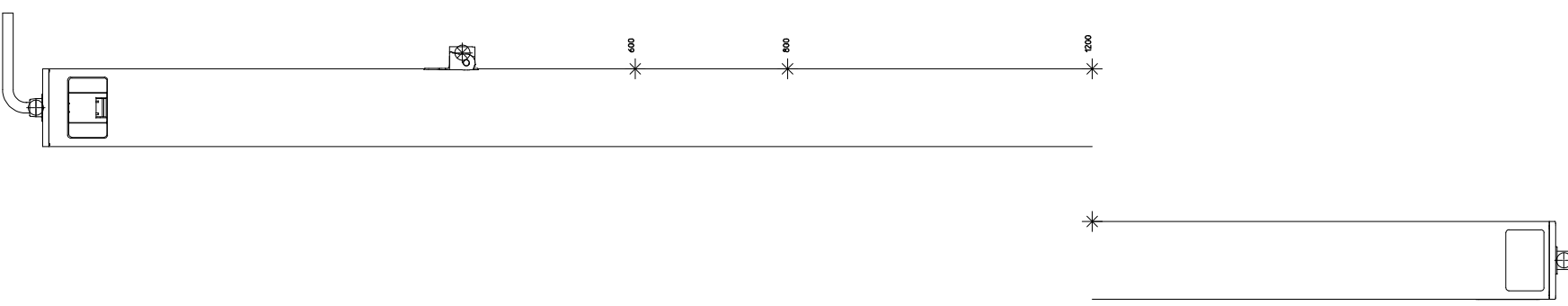
ID 147112 (EV1 / Standard)  
ID 147113 (RAL 9016)



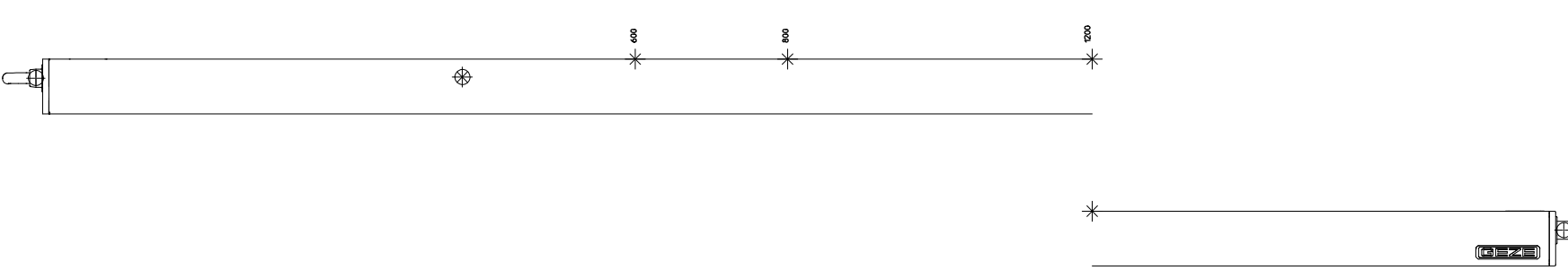
Antrieb / Drive

Ident-Nr.	Hub/stroke	EV1	RAL 9016
147080	600	X	
147081	600		X
147090	800	X	
147091	800		X
147100	1200	X	
147101	1200		X

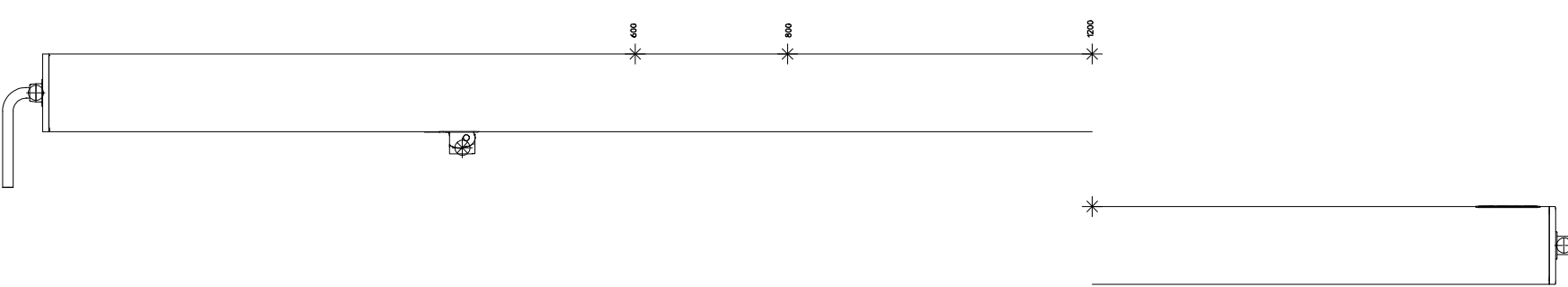
Draufsicht / Top view



Vorderansicht / Front view

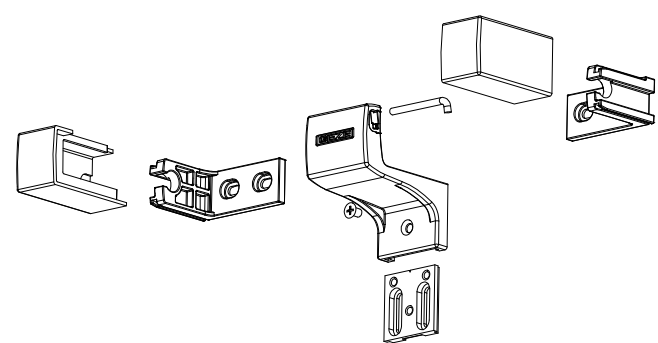


Unteransicht / Bottom view

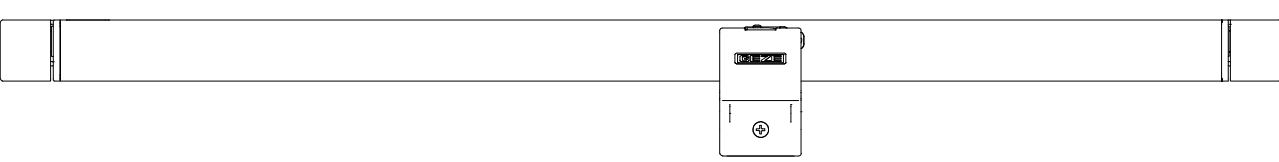
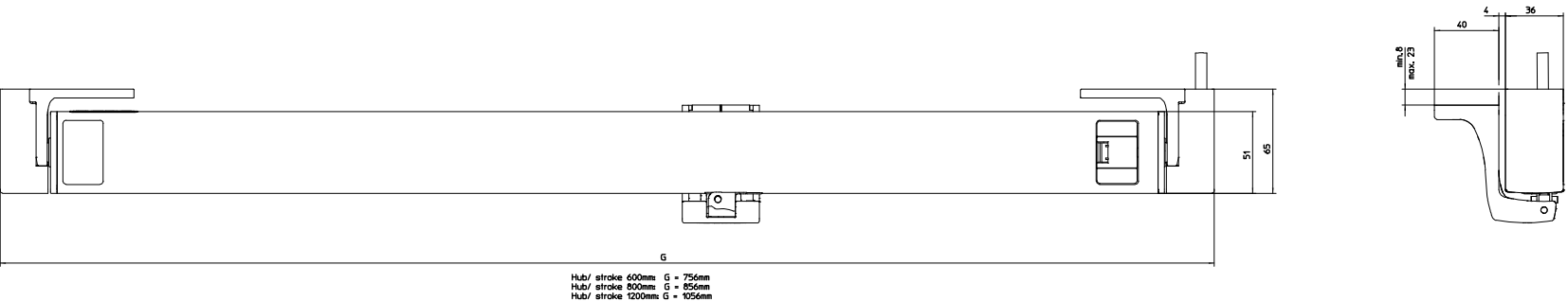


Rahmenmontage einwärts  
Frame mounting inwards

Konsolensatz A  
Bracket set A



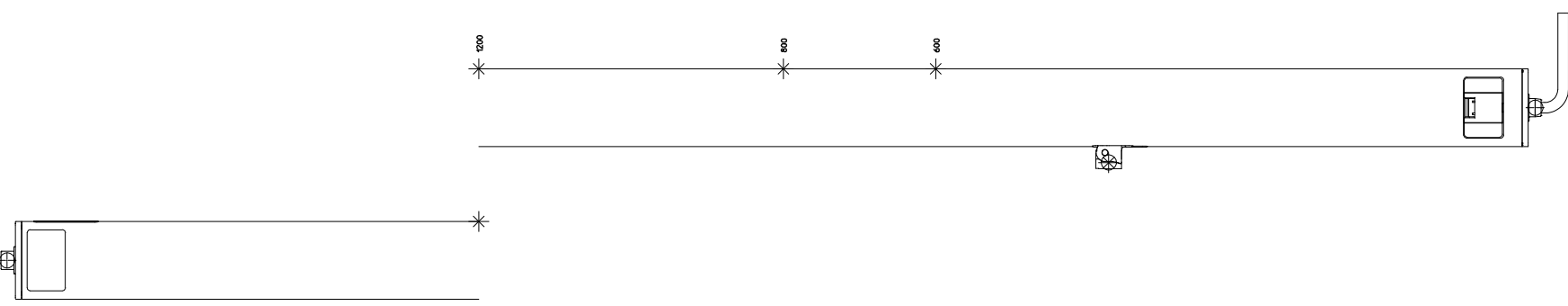
ID 147110 (EV1 / Standard)  
ID 147111 (RAL 9016)



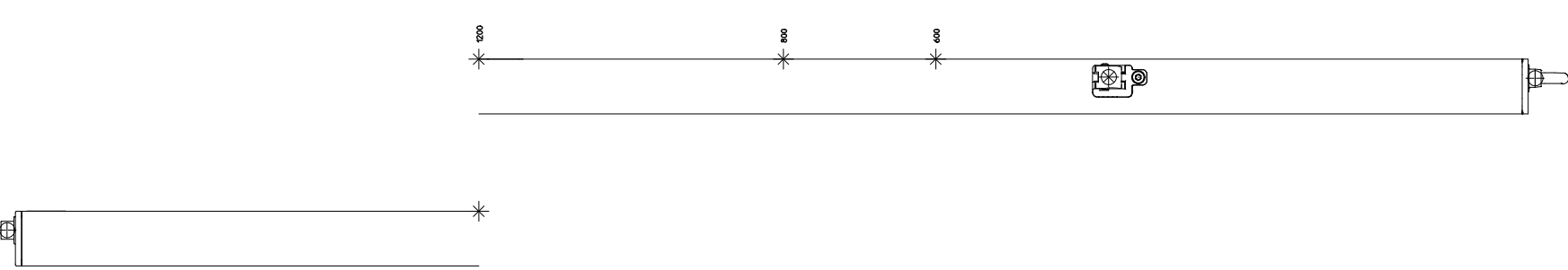
Antrieb / Drive

Ident-Nr.	Hub/stroke	EV1	RAL 9016
147080	600	X	
147081	600		X
147090	800	X	
147091	800		X
147100	1200	X	
147101	1200		X

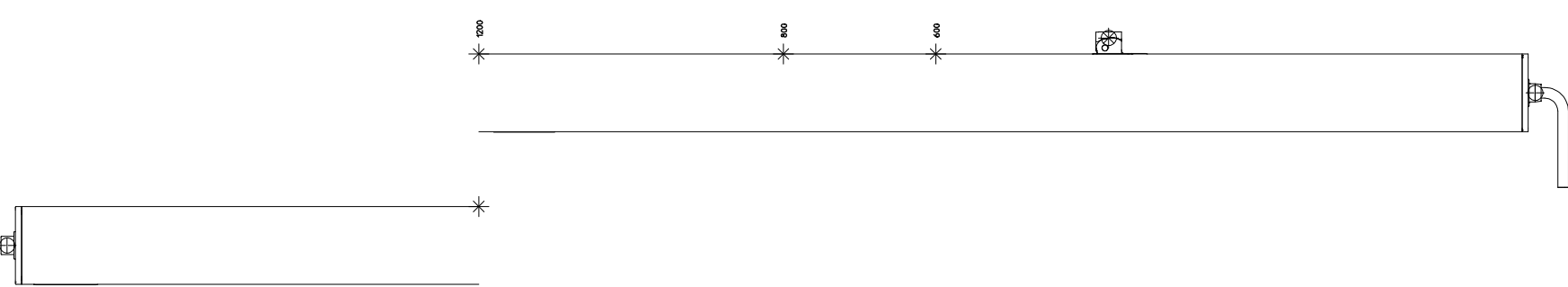
Draufsicht / Top view



Vorderansicht / Front view



Unteransicht / Bottom view



Technische Änderungen vorbehalten.  
Subject to technical changes.